

**IT-FINANCE**

Information Technology for Finance

**ITCharts Advanced  
Quick Manual**

# Contents

<b>Introduction.....</b>	<b>2</b>
<b>Customization examples.....</b>	<b>2</b>
<b>Toolbar description.....</b>	<b>11</b>
Cursor Mode (Default Mode).....	11
Create an Alert.....	11
Zooming into the chart.....	11
Drawing a segment or a line.....	11
Drawing Fibonacci lines.....	11
Typing text.....	12
Copying an object.....	12
Moving an object.....	12
Deleting an object.....	12
Changing the options of an object.....	12
<b>Create alerts.....</b>	<b>16</b>

## Introduction

The following presentation will help you understand the basics of ITCharts Advanced in just a few minutes. Please check that you understand each of the steps so as to make a pleasant experience out of ITCharts Advanced.

ITCharts Advanced can be fully customizable: it is possible to change colours, style, scale type, add indicators, switch indicators, change indicators parameters, make comparisons between securities, or resize indicators windows.

## Customization examples

Here are some examples of customization:

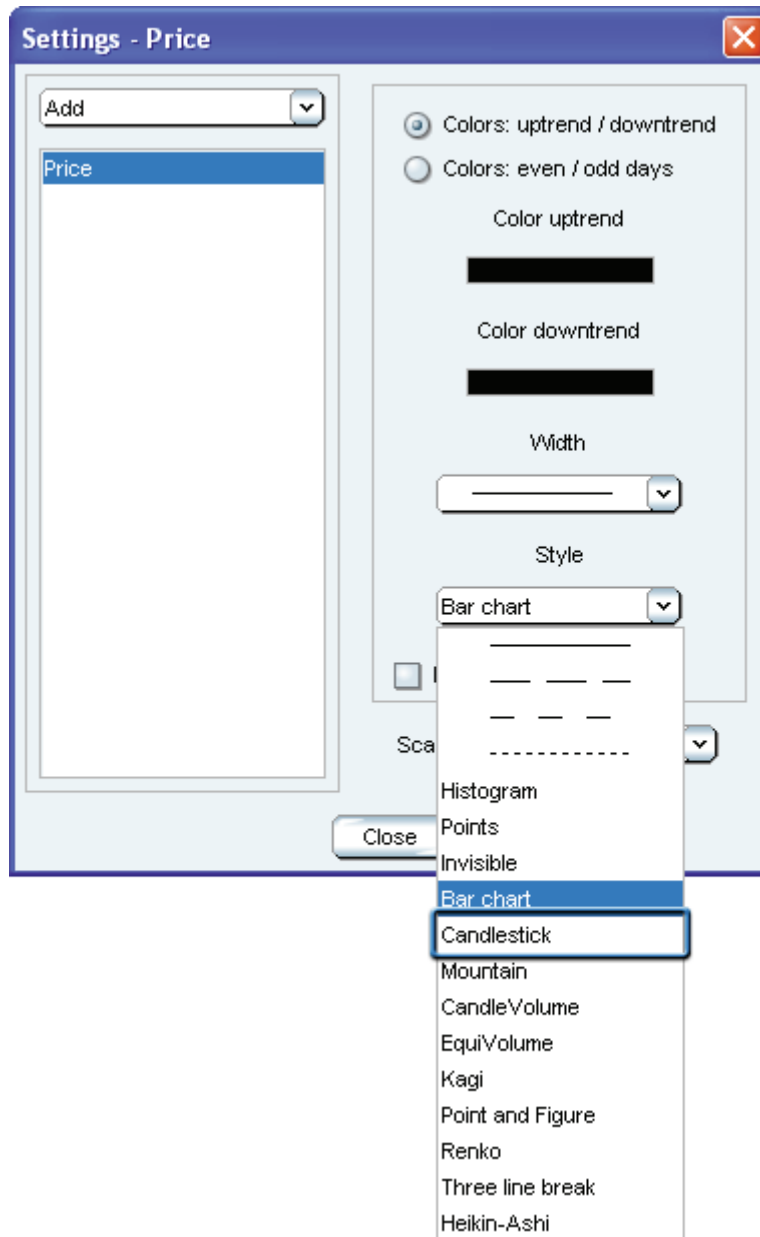
Let's begin with a 3 month closing line view of EUR/USD without any indicators.

Let's change from a closing line view to a candlesticks view. There are actually two possibilities: either right-click on the closing EUR/USD line and select "Settings Price", or left-click on the tool outlined in blue below.

Both actions launch the "Settings Price" window.



Next, click on the "Style" drop-down menu and choose "Candlestick".



Let's introduce now a 5 days moving average, 20 days Bollinger and standard Parabolic SAR on the EUR/USD candlestick chart. Launch the "Settings Price" window and click on "Add" drop-down menu to include them one by one.

Make sure you have on the left side of the "Settings Price" window: Moving average, Parabolic SAR and ( Boll up, Boll down, Boll middle).


Click on Moving average and set "Nbr periods" to 5. Please note that you can also change other settings of the Moving average depending on your needs. Here is an example with a thicker line trait, a blue colour and a Exponential Method:



Note that you can resize the horizontal scale by clicking on the left button of the mouse in the red rectangle outlined below, by holding down left button and moving the mouse to the left or to the right.

You can also resize the vertical scale by clicking on the left button of the mouse in the blue rectangle outlined below, holding down left button and moving the mouse upwards or downwards.



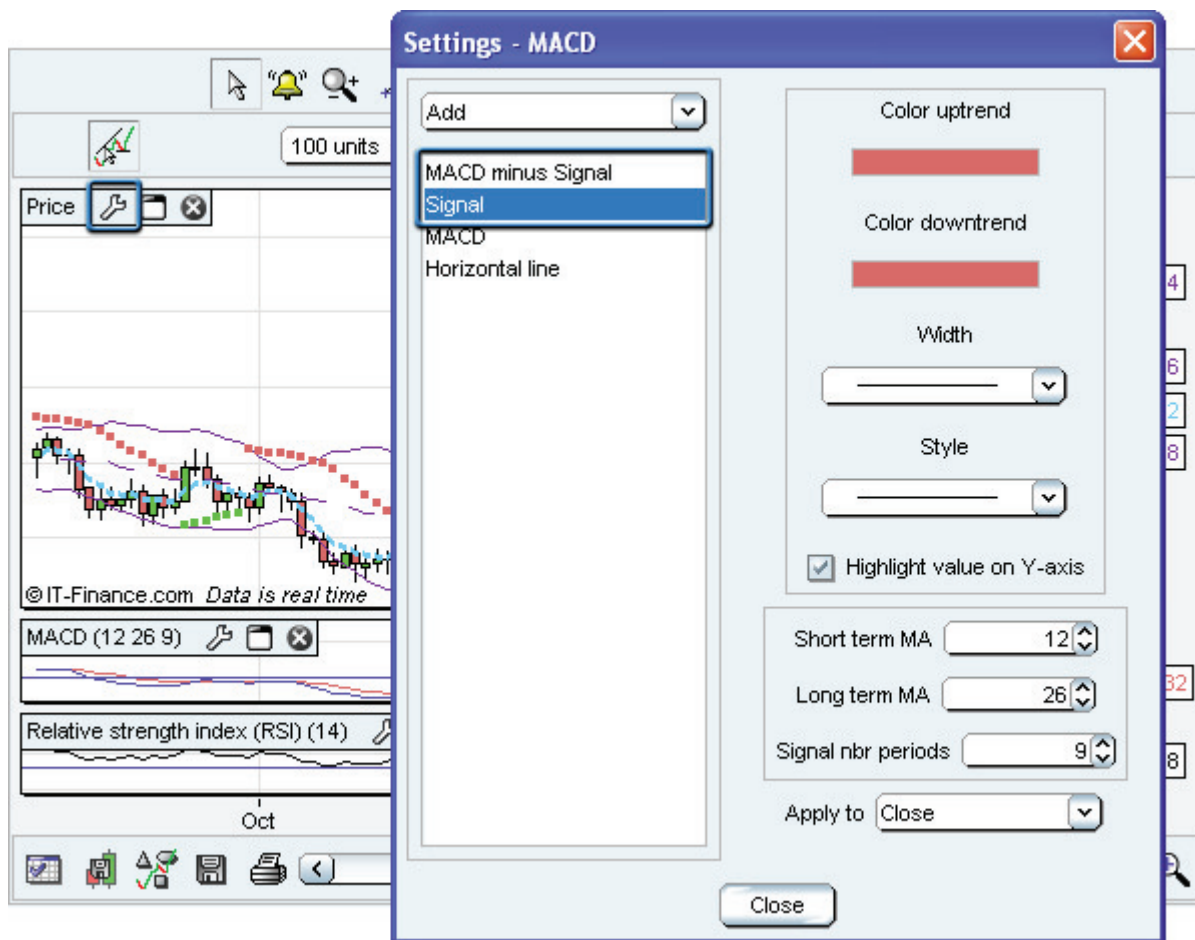
Note: You can come back to the optimized view by clicking on the icon .

Let's introduce a 14 days Relative Strength Index.

Left-click on the "Indicator/Backtest" button that is at the top right position of the charting window, select Relative Strength Index. Let's change MACD histogram to a two lines MACD view.

Click on the tool outlined below to change the properties of the MACD. Select MACD minus Signal, then click on "Style" drop-down menu and select "Invisible".

Then, select Signal, then click on "Style" drop-down menu and select "-----". Finally, select MACD, then click on "Style" drop-down menu and select "-----".



*Note that you can hide the indicators titles by unchecking "Always display Indicator Titles in charts" on the "Chart settings" menu.*

Let's move the "Relative Strength Index" window above the MACD window.

Left-click on the "Relative Strength Index" title, outlined below in red, hold down and move the mouse upwards until you see the rectangle outlined in blue.



Note that you can also enlarge the "Relative Strength Index" window by left-clicking on the white blank between "Price" window and "Relative Strength Index" window, holding down and moving the mouse upwards.



You can define two different parameters: the amount of historic data to load ("Duration") and the time scale ("View") for the charts you are viewing.



➤ **Duration** : selection of the amount of data to load

This option is available in both Intraday and End of Day mode. It defines the quantity of data you wish to load. For instance, if you wish to have 2 years of quotations loaded into your software, you should select "2 Years" in the drop-down menu named "Duration".

Changing the chartered stock will not affect the selection in terms of the duration option: in the same example, if you have loaded 2 years of historical data for a security, say Vodafone, then switching for another stock, say Microsoft, will load 2 years of data. The time to load the data therefore directly depends on the duration option you have chosen: 1 day of quotations will obviously take less time to load than 5 years of quotations.

Note that you can also select the quantity of quotes to load in terms of "units". One unit corresponds to one trading day. 50 units therefore correspond to 50 trading days or 10 weeks of quotations.

➤ **Tip** : we advise you to create at least 2 templates (please refer to the corresponding section). The first template could use few data and will hence load quickly. The second one could use more data to make more detailed analyses.

- ➔ **Timescale** : representation of each candlestick or bar chart

Changing the timescale resolution will directly affect the meaning of each candlestick (or bar chart, or any other dot as chosen in the 'Style' drop-down menu in the 'My Indicators' menu).


The timescale resolution defines the number of time units which one candlestick contains. For instance, each candlestick will represent 5 minutes of trading orders if you select "5 minutes" in the drop-down menu named "View".

Note that you have the choice between minutes, hours, daily, weekly, monthly and yearly resolution.


- ➔ **Calculation method**: in weekly representation for instance, the open, high, low, close prices are respectively the Monday opening, the highest, the lowest and the Friday close of each week. The volume in this mode is the sum of the volumes of the 5 trading days of each week. Bear in mind that changing timescale resolution affects all graphs, indicators and trend lines.

## Toolbar description


### ➔ **A. Cursor Mode (Default Mode)**

The icon  corresponds to the Cursor Standard Mode, which is selected by default. Click on the left button of the mouse wherever on the charts, hold down and move your cursor to move the charts. It can be helpful when you want to display some future.


### ➔ **B. Create an Alert**


The  icon allows you to create an alert. Click on the 'bell' and then in the chart displaying the security upon which the alert will be set.

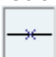
### ➔ **C. Zooming into the chart**


The icon  is the zoom button. Click on the left button of the mouse to set the first date of the time-period on which you wish to zoom in. Move the mouse rightwards and left-click again to set the second date. Note that on a zoomed view, you can use the horizontal scroll bar at the bottom of the chart to see quotes from other dates with the same zoomed view.

### ➔ **D. Drawing a segment or a line**


The icon  representing a segment allows you to draw segments. Click on the left button of the mouse to define the first point of your segment. Then move the mouse cursor and left-click again to define the second point of the segment.

The icon  representing a longer segment than the previous icon allows you to draw lines. The method to draw lines is similar to the method of segment drawing, clicking on the left button of your mouse to successively define two points by which the line should go through.


The icon  still allows you to draw a line, but the drawn line will this time be horizontal.

The icon  allows you to draw a vertical line.

### ➔ **E. Drawing Fibonacci lines**


Select the Fibonacci levels icon and left-click on two points in the chart to define the two extremes of the Fibonacci levels . A series of horizontal lines are drawn at the Fibonacci levels of 0.0%, 23.6%, 38.2%, 50%, 61.8% and 100% of the trend line. Fibonacci levels can be customized using the "Edit and Configure the object characteristics" feature.

**➤ F. Typing text**

Clicking on the icon  allows you to add text on the charts. Once the icon is pressed down, you can click anywhere on the charts to type your text. A window will automatically open, allowing you to select the text's font, size, style and color. Click on **OK** to confirm your choice.


Bear in mind that you can modify the place in which the text is situated (refer to paragraph **H**) and the style options of the text (refer to paragraph **J**).

**➤ G. Copying an object**


The icon  represents two parallel lines. This button allows you indeed to make a copy of any line, but also of any text element on your chart. Simply click on the object to copy and click anywhere else on the chart to paste the new object.

Notice that when you approach an object, this object turns to light blue, indicating that you can already click with your left mouse button to select it; this prevents you from having to aim precisely on the object, giving you a wider area in which to click.


**➤ H. Moving an object**

The button  is very similar to the previous one, in the sense that instead of copying an object, the same procedure will move any object you have selected. This feature is very much like the 'cut and paste' function in word-processing software.

**➤ I. Deleting an object**

Clicking on this icon  and then on any object (text or line) will delete it. Note again that when you approach an object, it turns to light blue, indicating that you can already left-click to delete it.

**➤ J. Changing the options of an object**

The icon  allows you to change the options of an object, whether it be a text element or a line. Click on the object to modify, and a window opens to let you modify the characteristics of this object: style, font, size and colour for text, width, colour, style and limits for lines.



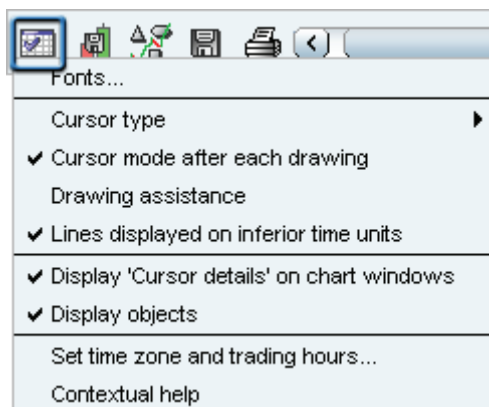
Click on this icon to change the colour. This feature is very useful to draw support and resistance with different colours.



Select this icon to enable/disable the icons of the icon bar.



We describe the function of the first icon. When you click on this icon, you access to this pull down menu.




Select display 'Cursor details' on chart windows, there's a new window. In this one you can read some informations about the price (open, high, low, close) and the levels of the indicators.

Click on "Cursor type", you access to a new pull down menu and you have the choice for the style of cursor (Circles, Line, Cross, None)

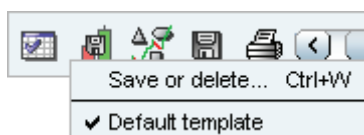
When you select cursor mode after each drawing, you obtain the cursor after each line drawing. When this option is not selected, you can draw several lines on after the other.

Drawing assistance can be selected help you in drawing supports and resistances: each time you place the mouse cursor near a specific quote price (extrema, close, open) or near an indicator specific value (Bollinger, oscillator..), the first value used to draw the line will be this specific value and the drawing assistance will help you in selecting the second point needed to draw the line.

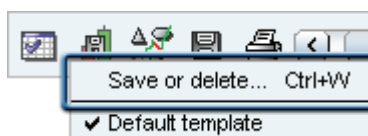
When you select display objects, the icon bar and the pull down menu will be visible. Click again on the option and the objects mentioned will be hidden.

Let's take a look at the second icon. To save your templates, you click on .

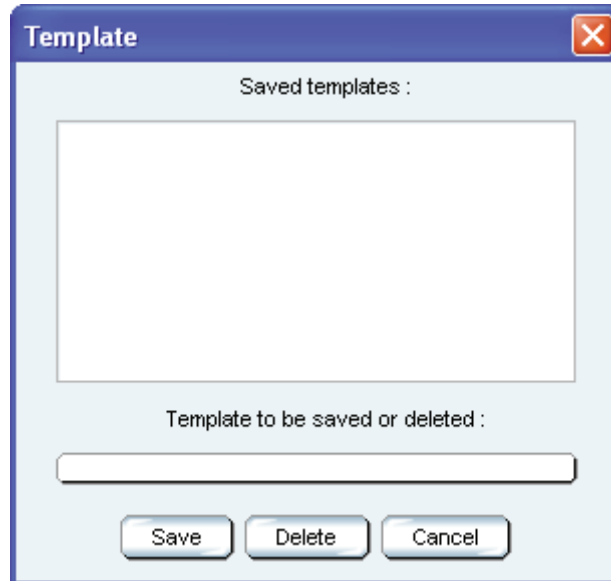
You will obtain this new window



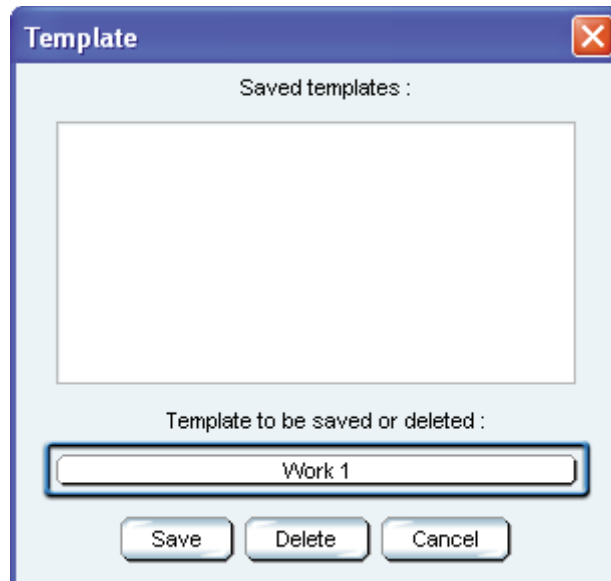
Click on 'Save or delete...'




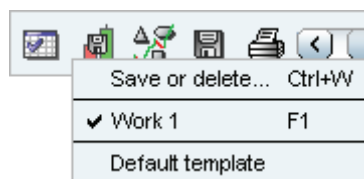
The following window will appear:



Click in the blue box and type in a name ("Work 1" for example) to save your template. Finally, click on Save.



Whenever you want to load it again, simply click on this icon . The name will appear in the drop-down menu.





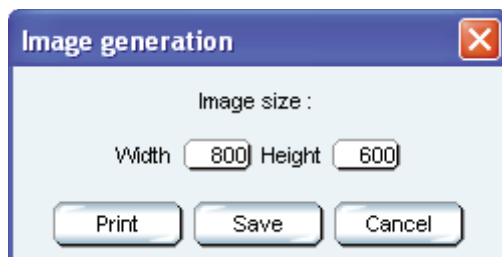
When you click on this icon, you will have access to a tools library to use in your technical analysis. You can also add text comments on it.



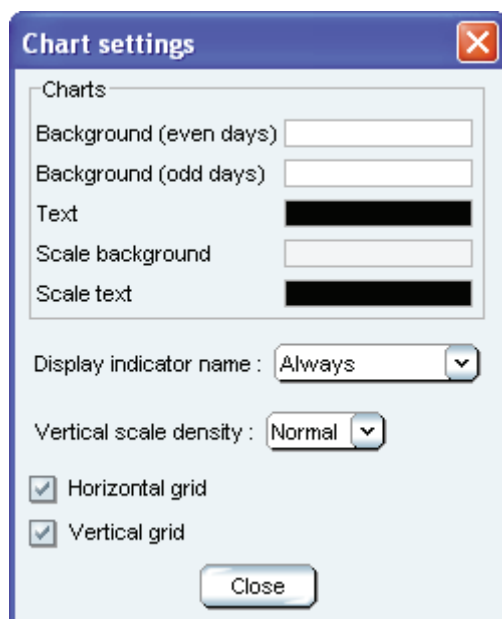
Click on this icon to save the new elements drawn on the graph (supports, texts, resistances...)



Click on this icon and set the width and height of the image of the chart. You can either save it on your PC or print it.



Click on this icon to set the properties of the graph.



Click on the color and select any other of your choice.

When you select "Always", the names of indicator will always be shown on the charts.

Click the option "Horizontal grid" to enable the horizontal Grid.

Click the option "Vertical grid" to enable the vertical Grid.



You can come back to the optimized view by clicking on this icon.



Click on - to zoom out, or + to zoom in.

## Create alerts


You can create alerts based on:

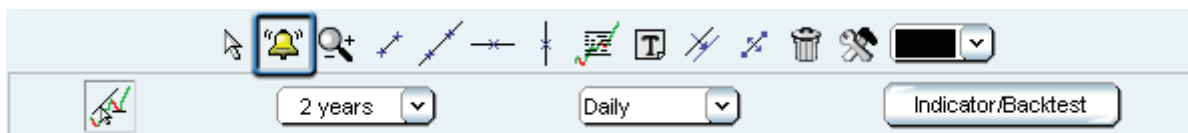
- ➔ a specific price of a security.
- ➔ a specific price of a customized indicator.
- ➔ the crossing of a customized line with a customized indicator.
- ➔ the crossing of a customized indicator with another customized indicator.

An alert may be either a single condition of the ones listed above, or be made up of several conditions which happen simultaneously.

All kinds of alerts are possible !

Here are the steps needed to create an alert:

1. To create an alert, you have to click first on the  icon of the tools menu shown below:



Then click on the chart of the security you wish to create an alert for. For example, if you want to create an alert on the EUR/USD price, you should click on the blue area outlined below:



A new window appears in which you can define all the characteristics of your alert: let's set an alert for a EUR/USD price above 1,2994.

The screenshot displays the 'Alert settings' window for 'EUR/USD Spot'. The window is divided into several sections:

- Condition List:** A list containing 'Condition 1'.
- Condition Configuration:**
  - Price 1:** 1,2936
  - Operator:** > =
  - Value:** 1,2994
  - Current period:** (Dropdown menu)
- Trigger:** Real time
- Signal:** Undefined
- Activation:**  Activate now,  Store for future activation
- Buttons:** New, Cancel

Below the configuration is a line chart titled 'Price' showing the EUR/USD Spot price from October to December 2007. The y-axis ranges from 1,26 to 1,33. A horizontal line is drawn at 1,2994. The current price is 1,2937. The chart includes a toolbar with zoom and pan controls.

2. Let's create now another alert based on 2 conditions: EUR/USD price below its 20 day simple moving average (that has already been drawn in blue on the chart (Condition 1) and when MACD 12 26 9 price is above its signal (Condition 2).

To create Condition 1, simply repeat step 1 and select 'Boll middle' in the drop-down menu as shown below:



To create Condition 2, click on "Add condition" (see button on image above), then click again on the blue area outlined below and fill in the limit in the Value box shown on the second image below. Finally, click on "New".



**Alert settings**

**EUR/USD Spot**

Time unit : Daily

MACD minus Signal 1 0,0002

> =

Value 0,0015

Current period

Delete condition

Condition 1  
Condition 2

Trigger : Real time

Signal : Undefined

Activate now  Store for future activation


New Cancel

MACD (12 26 9)

0,004  
0,003  
0,002  
0,0015  
0,001  
0,0002  
-0,001  
-0,002  
-0,003

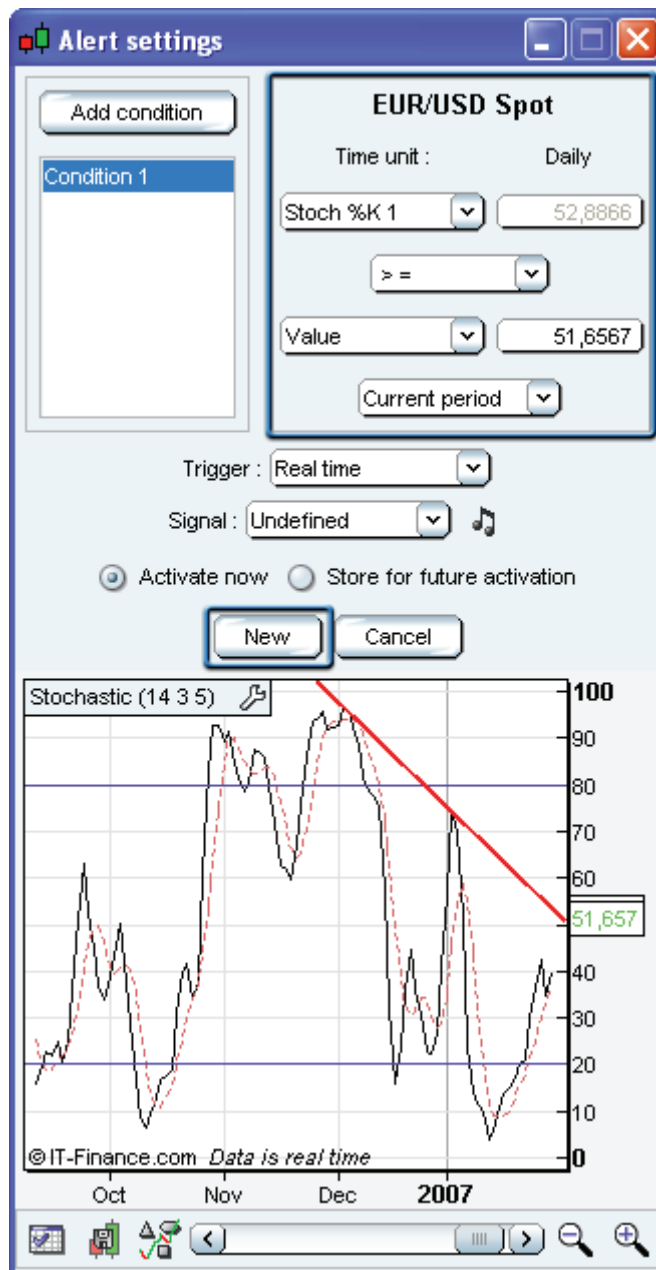
Oct Nov Dec 2007 Feb

© IT-Finance.com Data is real time

Let's add another alert on the Stochastic Indicator: the alert should be triggered when the Stochastic %K crosses the red line shown below. Click on the  icon of the tools menu and click on the red line.



The characteristics of the alert are automatically filled as shown below and you just need to click on "New" !



*Note that if you modify a drawn line that is used for an alert, the characteristics of the corresponding alert change accordingly.*

*Note that you can also make modifications on the chart included in the above window as if it was a normal chart window (change scale, modify drawn lines, ...).*

The current status of the alerts we have just created is available in the 'Alerts status' window. You can launch this window from the 'Display' menu available with a right click on the chart : 3 alerts have been created and one of them (id=1) has 2 conditions.

Notice the different display between visualised alerts and those that have been triggered but not yet visualised.



ID	Name	Reference 1	Com	Reference 2	Status	Period
0	EUR/USD Spot	Price	> =	Value	Waiting	Daily
1	EUR/USD Spot	Price	< =	Bollinger	Triggered	Daily
1	EUR/USD Spot	MACD	> =	Value	Waiting	Daily
2	EUR/USD Spot	Stochastic	> =	Value	Waiting	Daily

Lots of customizable alerts can be created within a few clicks. So enjoy the alerts module !