



# **MARKETSPREADS STANDARD CHARTS**

**INSTRUCTION  
BOOKLET**

## TABLE OF CONTENTS

<b>Introduction</b>	_____	
<b>Timeframes</b>	_____	
<b>Zoom: selecting the number of visible bars</b>	_____	
<b>Drawing functions</b>	_____	
<b>Description of the toolbar buttons</b>	_____	
Cursor mode (default mode)	_____	5
Zoom on a specific period of time	_____	5
Drawing a line	_____	5
Drawing a horizontal line	_____	5
Fibonacci levels	_____	5
Moving objects	_____	5
Copying objects	_____	6
Deleting objects	_____	6
<b>Settings menu: indicators &amp; chart styles</b>	_____	

**Settings menu: options** \_\_\_\_\_

Linear or log scale _____	9
Chart background color _____	10
Vertical scale density _____	11
Amount of future displayed in % of chart width _____	11
Highlight price, volume or indicator values on Y-Axis _____	12
Display countdown to next intraday bar _____	13
Display daily or yearly high and low on chart _____	14
Display horizontal and/or vertical grid _____	15
Troubleshoot button _____	15

**Saving your templates** \_\_\_\_\_

**Saving your studies** \_\_\_\_\_

**Printing** \_\_\_\_\_



## INTRODUCTION

This presentation will allow you to understand the basics of our ITCharts Light+ Flash tool in just a few minutes.

Please note: The markets available via your version may differ from the markets displayed in the images in

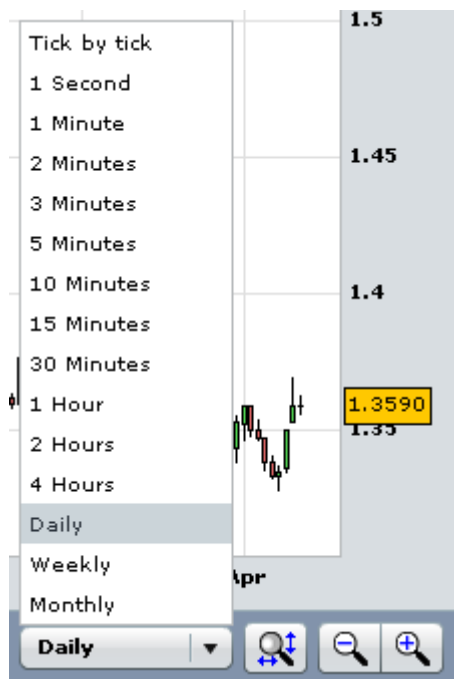


this manual included for illustrative purposes and some features may vary depending on your version.



## TIMEFRAMES

You can modify the time interval of the charts by using the drop-down list outlined in blue below:



You have a large set of choices at your disposal:

- Tick by tick
- 1 Second
- 1 Minute
- 2 Minutes
- 3 Minutes
- 5 Minutes
- 10 Minutes
- 15 Minutes
- 30 Minutes
- 1 Hour
- 2 Hours
- 4 Hours
- Daily
- Weekly
- Monthly



## ZOOM: SELECTING THE NUMBER OF VISIBLE BARS

The following buttons allow you to display more or less bars on the screen:





## DRAWING FUNCTIONS


This section gives some easy to use examples of the drawing interface.



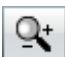
The toolbar located at the top to the left of the application gives you access to all drawing features which are described in the next section.

## DESCRIPTION OF THE TOOLBAR BUTTONS

### ➤ [Cursor mode \(default mode\)](#)


The  icon corresponds to the standard cursor mode, which is selected by default. Hold down the left button of the mouse on the chart and move it to move the charts along the time or price axis. This can be helpful when you want to display a specific period of time or show future periods. To customize the chart axis, hold down the left button of the mouse on the time (or price) axis and move the mouse left to right (or up and down).

### ➤ [Zoom on a specific period of time](#)

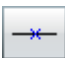
The  icon allows you to zoom in on a specific period of time on the chart.

Left-click to set the first date of the time period which you wish to zoom. Move the mouse to the right and click again on the left button to set the second date. Note that on a zoomed view, you can use the horizontal scroll bar at the bottom of the chart to see quotes from previous or later dates with the same zoomed view.


### ➤ [Drawing a line](#)

The  icon is used to draw lines. Click with the left button of the mouse to define successively two points which will be crossed by the line.

### ➤ [Drawing a horizontal line](#)


The  icon allows the drawing of a line, but in this case the line will be horizontal.

### ➤ [Fibonacci levels](#)

Select the  icon shown, then left-click on the two points of the chart that will define the end values of the Fibonacci levels.

A series of horizontal lines are drawn at the Fibonacci levels of 0.0%, 23.6%, 38.2%, 50%, 61.8% and 100% of the trendline.

### ➤ [Moving objects](#)


The  icon allows you to move any drawn object.

After you have selected it, left click on the item you wish to move. Once you have completed the move, left click again to fix the new position of the item.

Note that you can also use this mode to move only one part of the object (ex: move one point in a drawn line to change its slope).

## ✦ Copying objects




The  icon enables you to copy any object in your chart. Simply click on the object to copy and click anywhere else on the chart to paste the new object.

Notice that when you approach an object, this object turns to light blue, indicating that you can already click with your left mouse button to select it, thus preventing you from having to aim precisely on the object and giving you a wider area in which to click.


## ✦ Deleting objects



Click on the  icon, then click again on any object (text or line) to delete it.

Notice that when you approach an object, this object turns to light blue, indicating that you can already click with your left mouse button to delete it.




**Tip:** To simultaneously delete all the objects drawn on the chart, select , then double left-click on the chart and select "Delete".

## SETTINGS MENU: INDICATORS & CHART STYLES

There are a large number of indicators available. To add or modify or remove an indicator on your chart, click on the Settings button in the lower-left of the chart.

Each indicator displayed in the "Settings" window may be modified. This means you can sharpen your technical analysis by adjusting the parameters of the selected indicators.

For instance, you can modify the number of days to be considered in the calculation of the moving average. Three separate moving average calculations are available in the workstation; should you not wish one of the three moving averages to appear, simply delete the number in the third, second or first MA parameter box.

 **Tip:** Ticked boxes activate indicators. Clear boxes if you want to deactivate corresponding indicators.

Default values are already set for all indicators. However, you may change these values as you wish.



You can also change the chart style from this window to candlesticks, bar charts, mountains, or lines on open, high,

low or close:



## SETTINGS MENU: OPTIONS

To modify the options of the application, click on settings in the lower-left of the application and then choose "Options". The following menu will appear:



### ➤ [Linear or log scale](#)

The log scale option allows you to select a linear or logarithmic scale.

The linear scale is the default one. In this case there is no visual difference on the Y-axis between 10 and 20 and between 100 and 110.

Log scale transforms the Y-axis by applying the log function to the representation of the prices. In this case, there is no visual difference between 10 and 20 and between 100 and 200 on the Y-axis.

## ➤ Chart background color

You can set different colors for the chart background. In intraday views, you can choose a different color for even and odd days to easily see when a new trading day begins on the charts.



In daily views and above, the background color for the charts will be the color chosen for “even days”.

## ➤ Vertical scale density

Vertical scale density can be set to high, normal or low using the selector shown below. Setting a high



density will display more values on the Y-axis as shown.

## ➤ Amount of future displayed in % of chart width

You can choose to reserve more or less space on the chart for the display of future data by default. To increase the % of chart width reserved for future data, increase the appropriate parameter. To show only past data on the chart, set this parameter to 0.

➤ Highlight price, volume or indicator values on Y-Axis

It's possible to display on the Y-axis the current values for price, volume and indicators as shown below by



clicking the appropriate boxes.

## ➤ [Display countdown to next intraday bar](#)

In intraday views, the user can display a countdown until the time that the next intraday candle should begin. The countdown is highlighted on the Y-axis in a green box as shown below (33 minutes and 43 seconds to

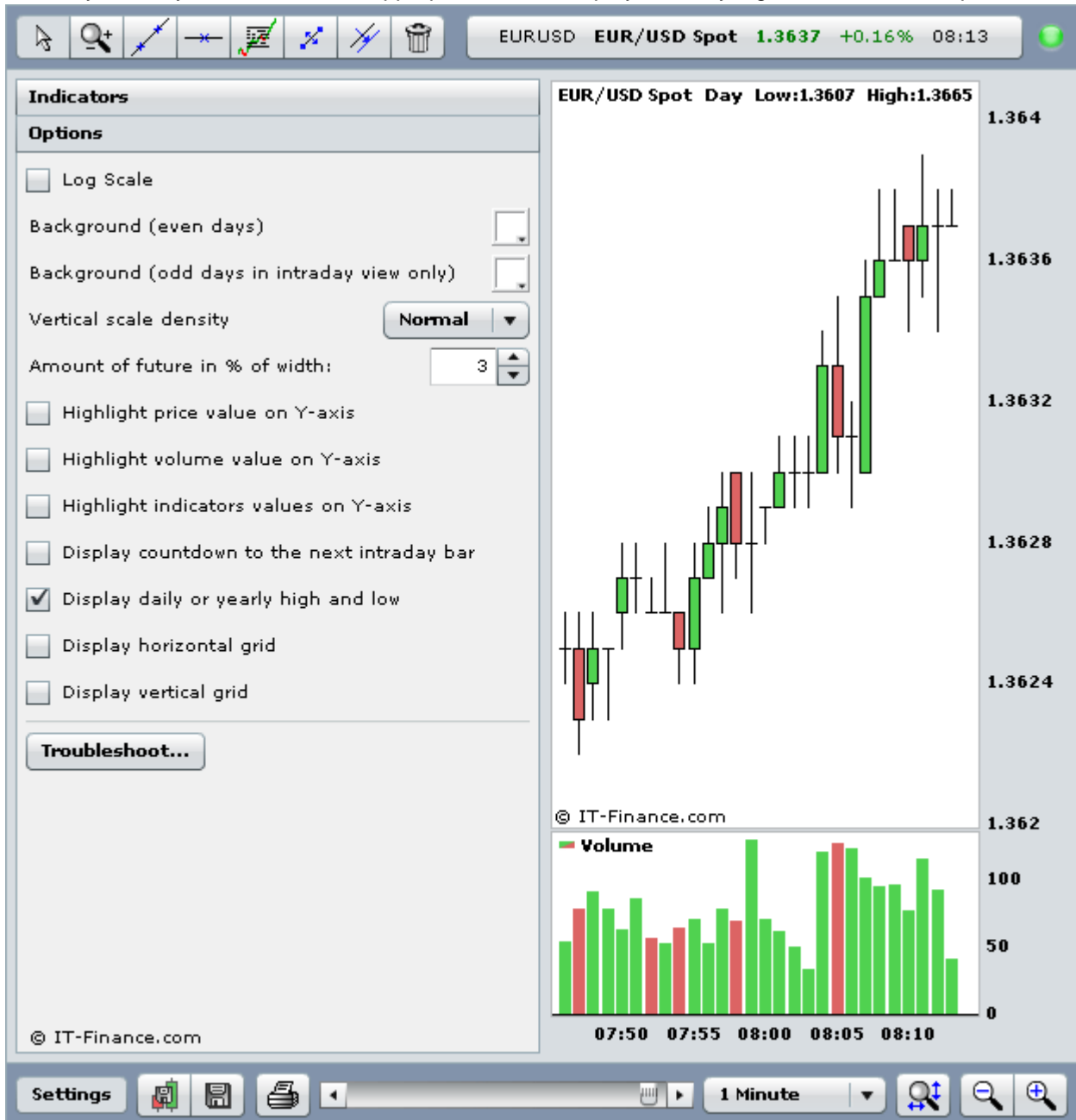


next intraday bar on the 1-hour chart shown).

When there are only a few seconds left, the green box will turn yellow then red as shown: 

◆ [Display daily or yearly high and low on chart](#)

In intraday views, you can check the appropriate box to display the daily high and low at the top of the chart



as shown. In daily views and above, checking the same box will display the yearly high and low.

➔ **Display horizontal and/or vertical grid**

You can display or hide the vertical grid on charts by checking the appropriate boxes. In the example below, only the vertical grid is displayed.

- ➔ In intraday views, transitions between 2 different days are shown by thicker vertical grid lines.
- ➔ In daily views, transitions between months are shown by thicker vertical grid lines.



- ➔ In monthly views, transitions between years are shown by thicker vertical grid lines.

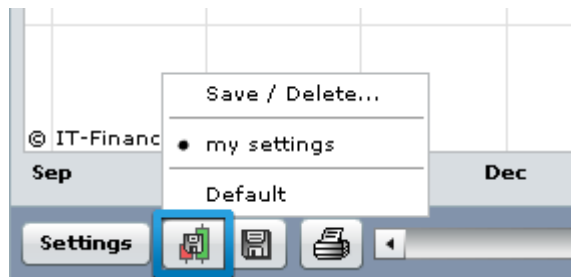
➔ **Troubleshoot button**

The troubleshoot button can be used to send a report to IT-Finance technicians concerning the charting application. You have the possibility to type a description.

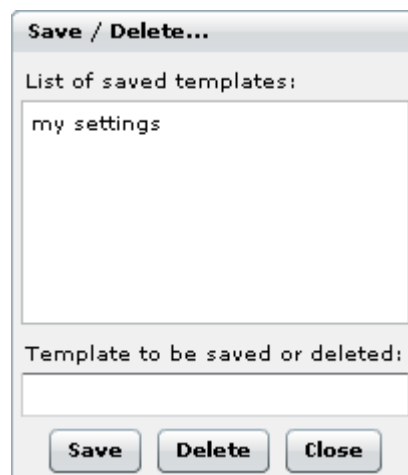
## SAVING YOUR TEMPLATES

Your template consists of your chosen options, the indicators displayed, the parameters used to draw them and also the size of the indicator windows.

If you wish to save a new template, first click on the  icon, then click on "Save/Delete". A small window appears allowing you to choose the name of the new template, for instance "my settings". Each saved



template may be applied in the future.





## SAVING YOUR STUDIES

### IMPORTANT:

Do not forget to click on the disk icon every time you leave the software if you want to save all your objects and comments created or modified during your session.

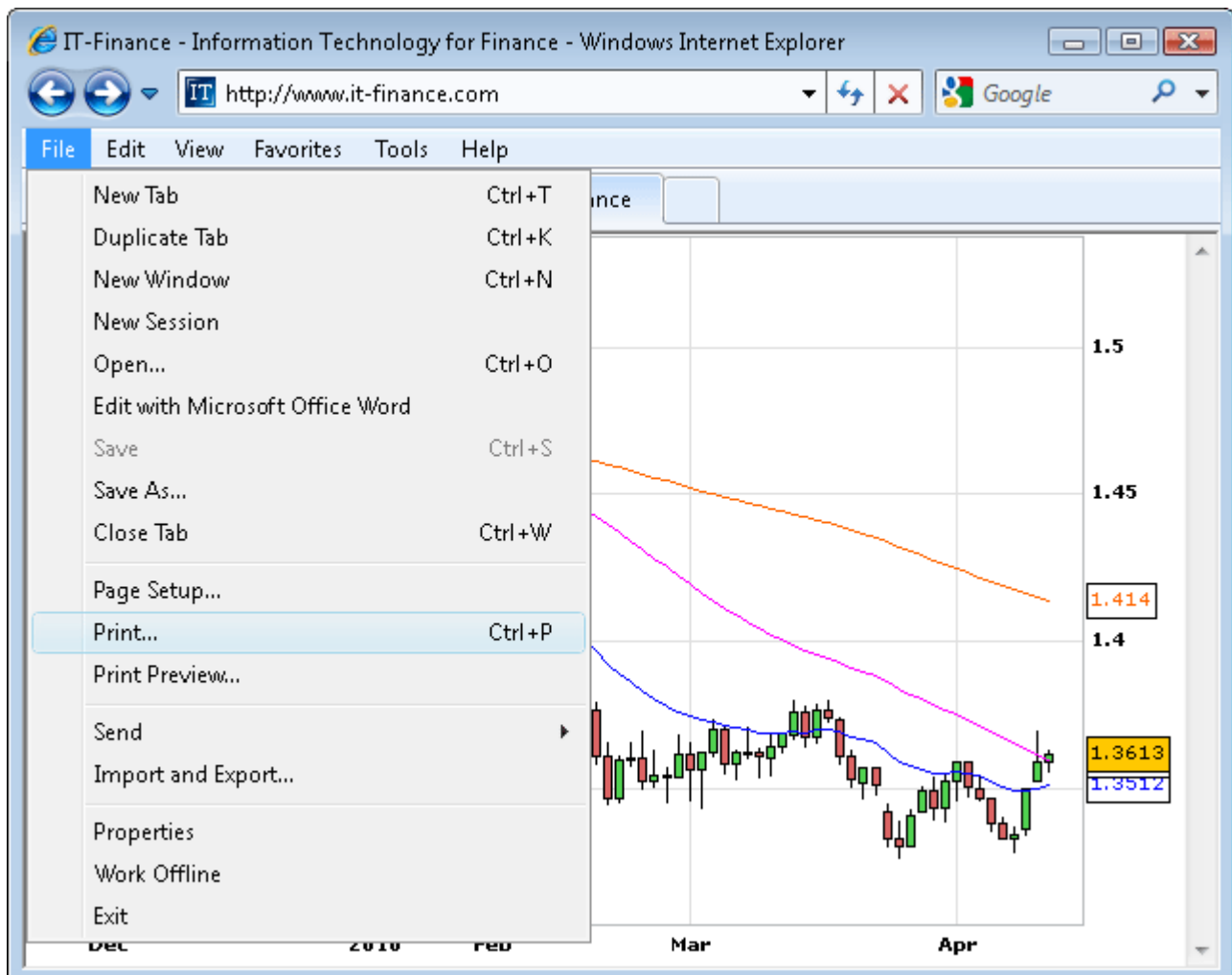



**PRINTING**

Every time you click on the printer icon, a new browser window containing a screenshot will open.



You may then print it out:



IT-Finance - Information Technology for Finance - Windows Internet Explorer

http://www.it-finance.com

File Edit View Favorites Tools Help

- New Tab Ctrl+T
- Duplicate Tab Ctrl+K
- New Window Ctrl+N
- New Session
- Open... Ctrl+O
- Edit with Microsoft Office Word
- Save Ctrl+S
- Save As...
- Close Tab Ctrl+W
- Page Setup...
- Print... Ctrl+P**
- Print Preview...
- Send
- Import and Export...
- Properties
- Work Offline
- Exit

Dec 2010 Feb Mar Apr

1.5  
1.45  
1.414  
1.4  
1.3613  
1.3512

